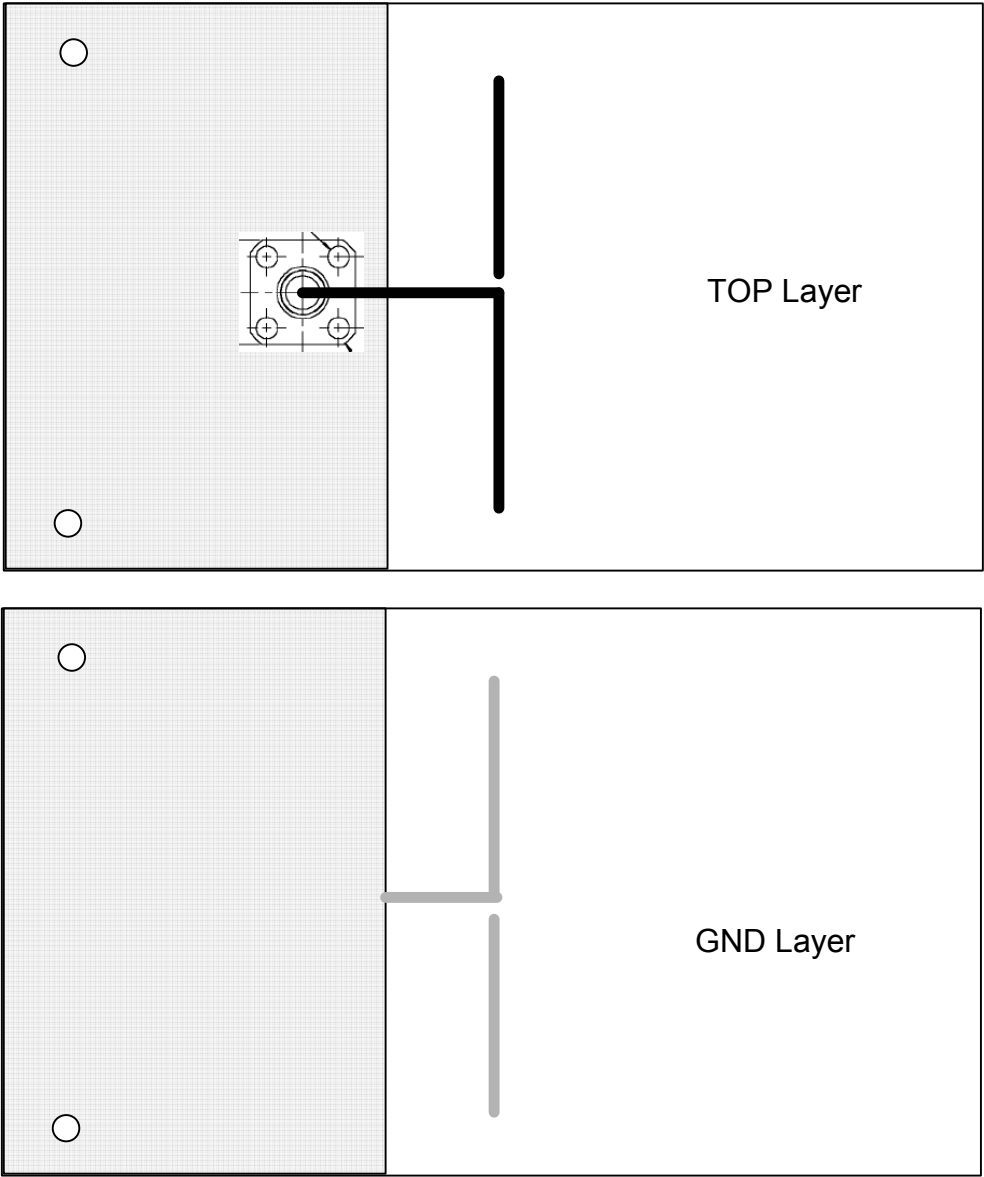


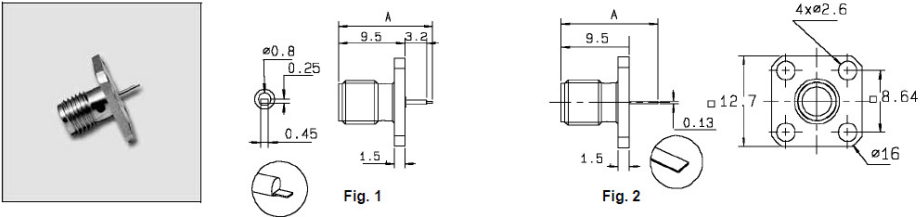
Assume 1.6mm FR-4
 trace width = 3mm approx, quarter wavelength = 17mm (compare free space with wire = 31mm)

Dipole elements 20mm from ground plane

Note top and bottom layer plots allow for a single ended feed.



STRAIGHT FEMALE SQUARE FLANGE RECEPTACLES - FLAT TAB



Part number (gold)	Part number (passivated)	Fig.	Dimensions A (mm)	Captive center contact	Panel drilling
R125 501 000	R125 501 001	1	13.5	yes	P04
R125 510 000	R125 510 001	2	12	yes	P04
R125 620 000	R125 620 001	2	10.38	yes	P04